



Title:

## Certificate of Analysis (CoA)

**Date:** 3/12/2026  
**Date Tested:** 3/11/2026  
**Customer:** Elite Standard Peptides  
**Testing material:** GLP-2T  
**Lot Number:** ESP-GLP2T-15MG-B01  
**BT Sample ID:** 005000039218351  
**Labeled Peptide Content/Potency:** 15 mg  
**Storage:** R.T.  
**Visual Description:** clear vial: white sample, white label, silver crimp, purple plastic cap.  
**Labeled as:** GLP-2T  
**Manufacturer:** Elite Standard Peptides  
**Testing Purpose:** FTIR and HPLC analysis for the identification, purity, potency and composition of a peptide product. It does not provide information on particulate matter, microbial contamination or presence of endotoxins.



Test	Method	Specification	Result
General Appearance	USP <630>	white powder	white powder
Mass	USP <41>	As recorded	104.5 mg
FTIR Identification and Composition Analysis	USP <197A>	Sample spectrum should confirm the content of peptide via characteristic bands	FTIR sample spectrum confirms the presence of GLP-2T with addition of excipient(s)/fillers.
HPLC Purity of Peptide Assay	USP <621>	Specifications: $\geq 98\%$	99.9 %
HPLC Potency Assay	USP <621>	Specifications: 90 – 110% of 15 mg	16.1 mg (107.4 %)
Peptide-to-Excipients Ratio	USP <1151>	Recommended ratios of (1:2) to (1:10) for (peptide: excipients)	16.1 : 88.4 mg (1:5.5)

The results of the CoA relate only to the item(s) tested and applied to the sample as received.



Andrea Castro, AS  
Scientist-II  
BTLabs



Verna Zheng, AS  
Scientist-II  
BTLabs

5730 Corporate Way | Suite 220 | West Palm Beach, FL 33407  
Phone: (561) 625-0133

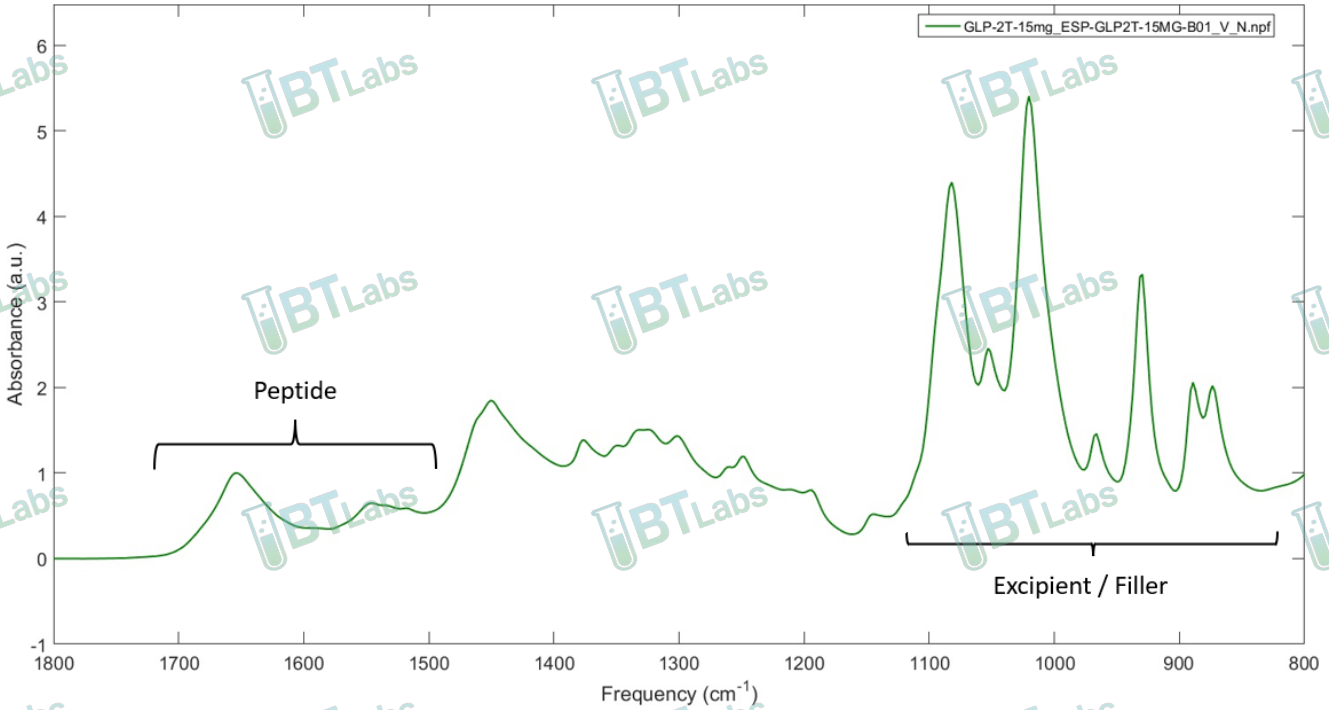
E-mail: [info@btlabtesting.com](mailto:info@btlabtesting.com) | Website: <https://btlabtesting.com>



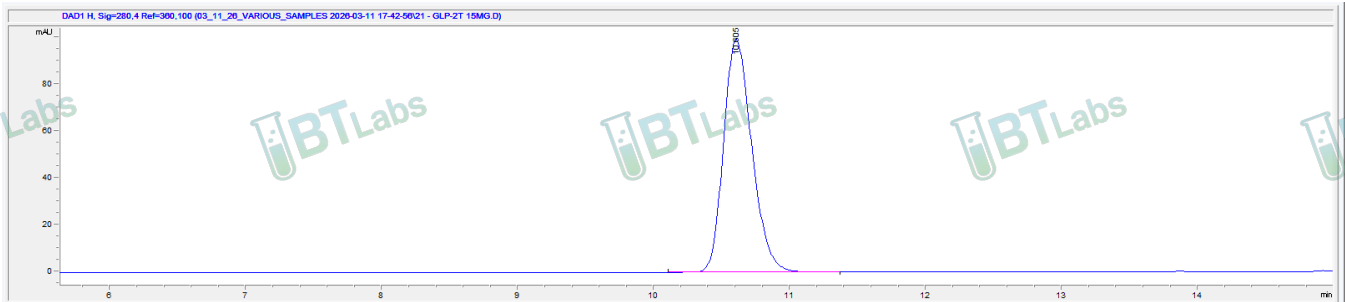
Title:

## Certificate of Analysis (CoA)

### FTIR ID and Composition Analysis: GLP-2T Lot ESP-GLP2T-15MG-B01



### HPLC Purity and Potency Assay @ 280 nm: GLP-2T Lot ESP-GLP2T-15MG-B01



#### **GLP-2T Lot ESP-GLP2T-15MG-B01 @ 280 nm**

Peak #:	Retention Time (min)	Area (mAU*s)
1	10.605	1438.7