



Title:

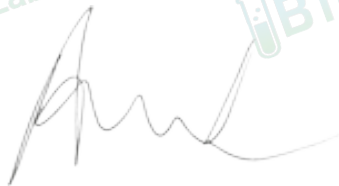
## Certificate of Analysis (CoA)

**Date:** 5/18/2026  
**Date Tested:** 5/14/2026  
**Customer:** Elite Standard Peptides  
**Testing material:** KLOW  
**Lot Number:** ESP-KLOW-80MG-B01  
**BT Sample ID:** 005000040060423  
**Labeled Peptide Content/Potency:** 80 mg  
**Storage:** R.T.  
**Visual Description:** Small clear vial: purple sample, black label, silver crimp, orange plastic cap.  
**Labeled as:** KLOW  
**Manufacturer:** N/A  
**Testing Purpose:** FTIR and HPLC analysis for the identification, purity, potency and composition of a peptide product. It does not provide information on particulate matter, microbial contamination or presence of endotoxins.

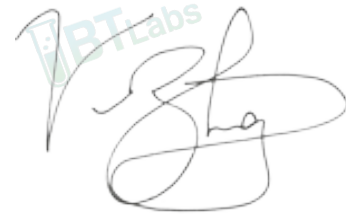


Test	Method	Specification	Result
General Appearance	USP <630>	purple powder	purple powder
Mass	USP <41>	As recorded	229.9 mg
FTIR Identification and Composition Analysis	USP <197A>	Sample spectrum should confirm the content of peptide via characteristic bands	FTIR sample spectrum confirms the presence of KLOW with addition of excipient(s)/fillers.
HPLC Purity of Peptide Assay	USP <621>	Specifications: $\geq 98\%$	99.7 %
HPLC Potency Assay	USP <621>	Specifications: 90 – 110% of 80 mg	GHK-Cu 55.8 mg (69.8 %) KPV 9.2 mg (11.5 %) BPC-157 9.1 mg (11.4 %) TB-500 11.1 mg (13.9 %)
Peptide-to-Excipients Ratio	USP <1151>	Recommended ratios of (1:2) to (1:10) for (peptide: excipients)	85.3 : 144.6 mg (1:1.7)

The results of the CoA relate only to the item(s) tested and applied to the sample as received.



Andrea Castro, AS  
Scientist-II  
BTLabs



Verna Zheng, AS  
Scientist-II  
BTLabs

5601 Corporate Way | Suite 206 | West Palm Beach, FL 33407  
Phone: (561) 941-4835

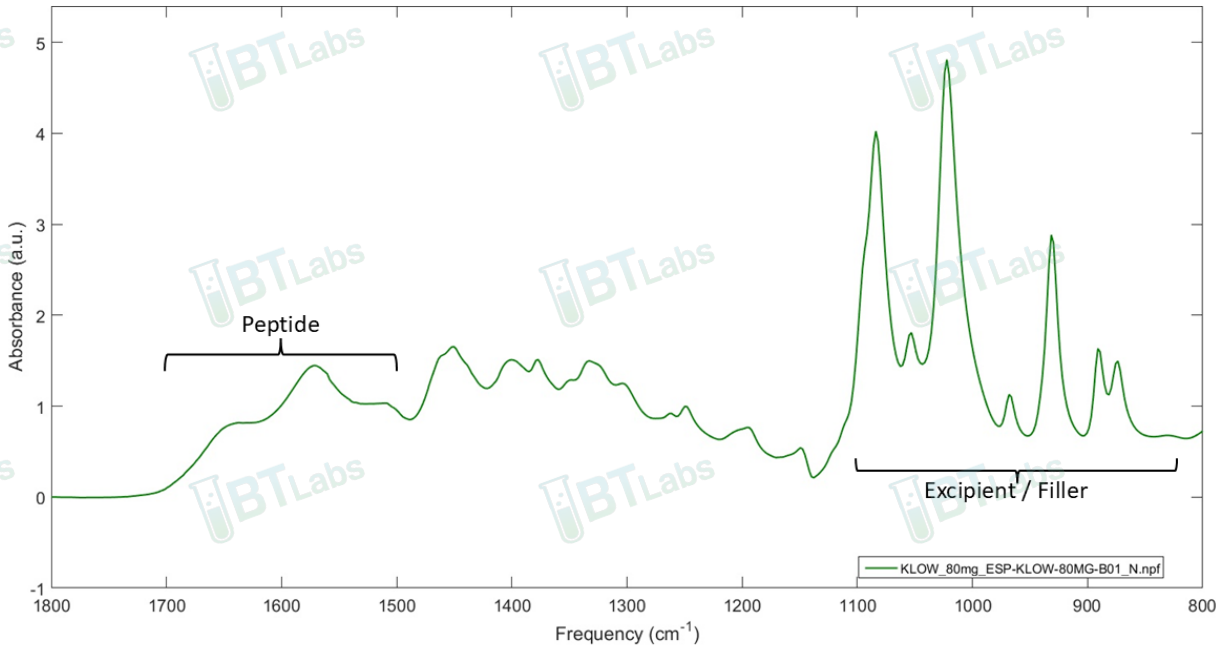
E-mail: [info@btlabtesting.com](mailto:info@btlabtesting.com) | Website: <https://btlabtesting.com>



Title:

## Certificate of Analysis (CoA)

### FTIR ID and Composition Analysis: KLOW Lot ESP-KLOW-80MG-B01



### HPLC Purity and Potency Assay @ 220 nm: KLOW Lot ESP-KLOW-80MG-B01



#### **BPC-157 TB-500 GHK-Cu KPV Lot ESP-KLOW-80MG-B01 @ 220 nm**

Peak #:	Retention Time (min)	Area (mAU*s)
1	1.59	14111.3
2	1.815	3143
3	3.817	2641.4
4	4.17	1696.6

5601 Corporate Way | Suite 206 | West Palm Beach, FL 33407  
Phone: (561) 941-4835

E-mail: [info@btlabtesting.com](mailto:info@btlabtesting.com) | Website: <https://btlabtesting.com>